

Gel seat pad fitting to an XT600e. Equipment needed heavy duty staple gun, electric carving knife, hammer, small screwdriver, pliers and double sided sticky tape.

Remove seat.



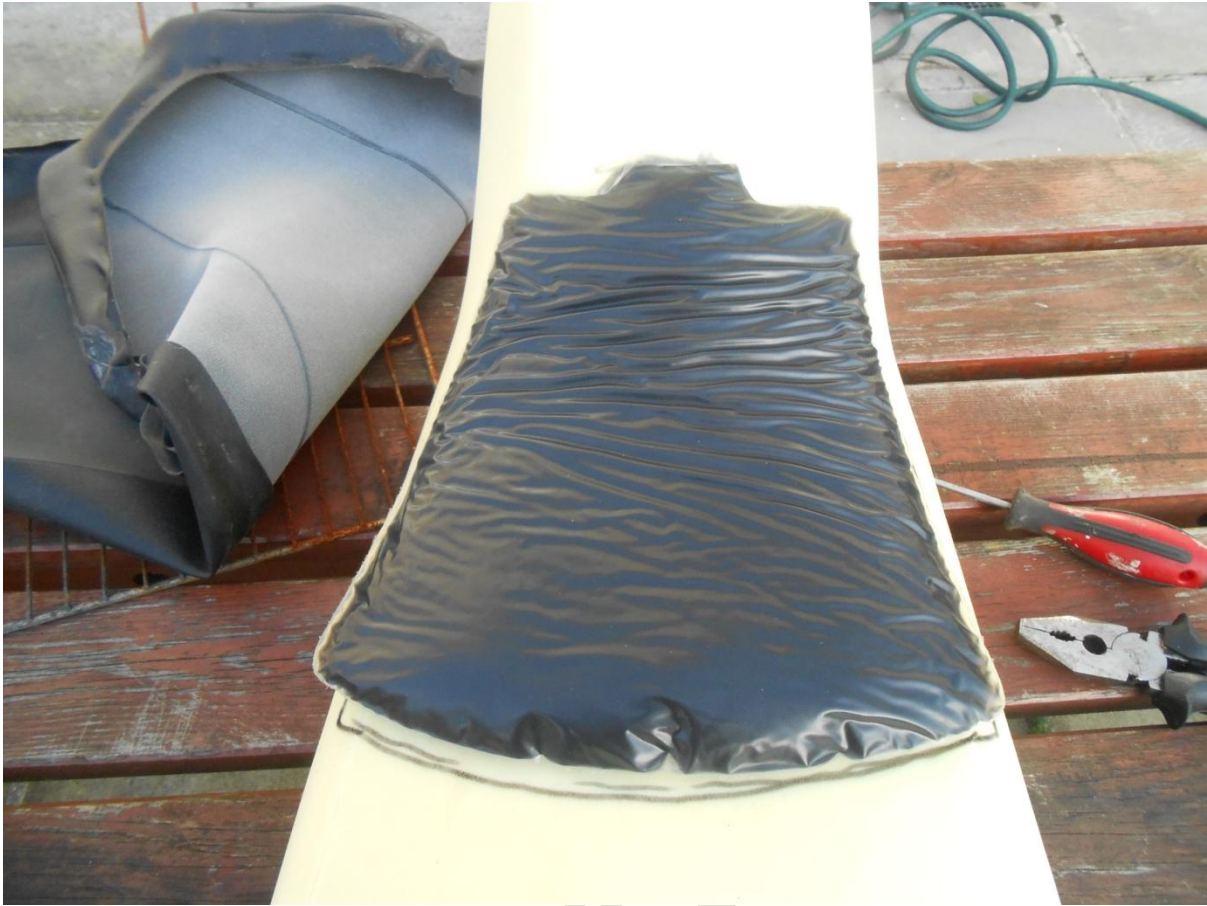
Remove staples using a small screwdriver and pliers.

Dan Mec



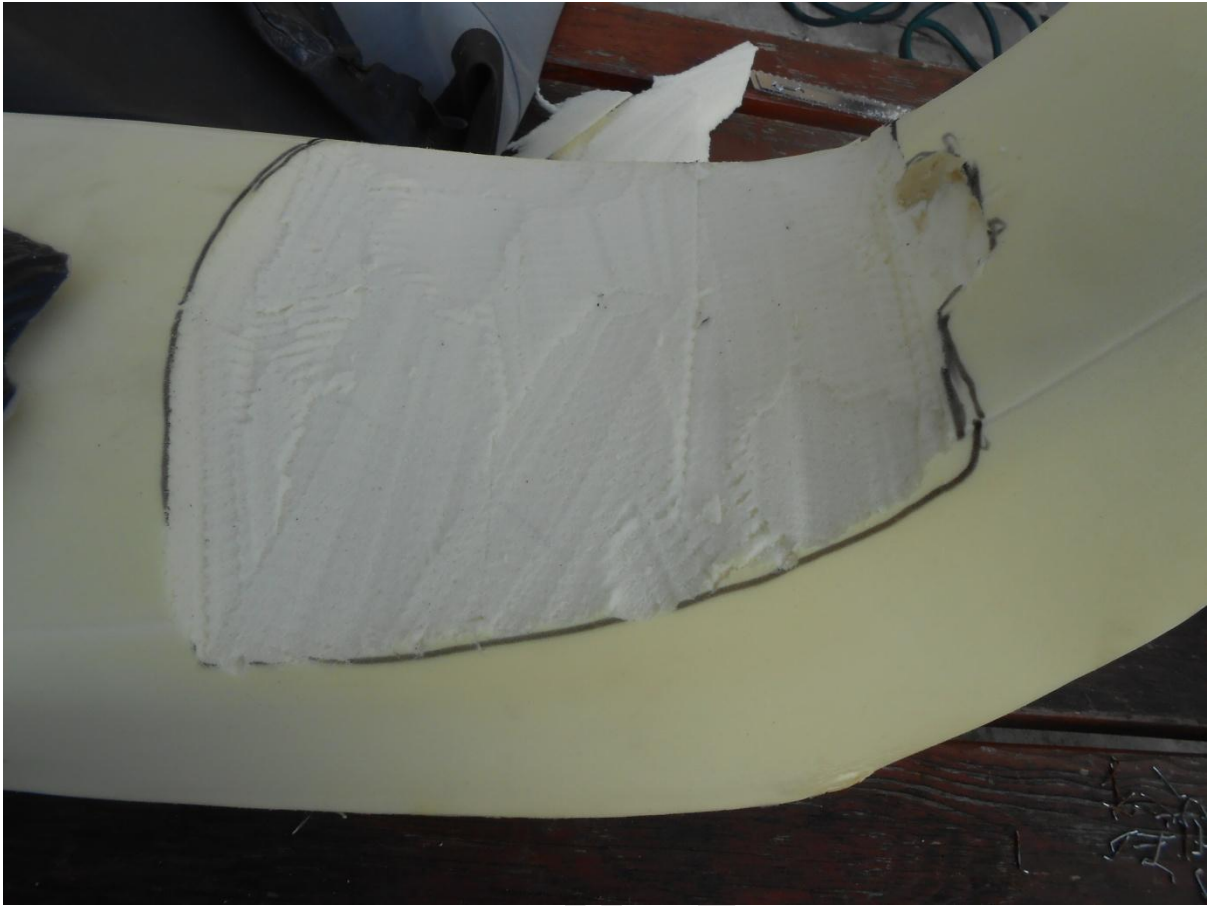
Mark the foam using the gel pad this one is a medium.

Dan Medica



Cut about 10mm of foam using the carving knife.

Dan Medica



Use some double sided tape to stick the gel pad to the foam.

Dan Medica



Put the cover back on and staple into place.

Dan Medica



Refit the seat to the bike.